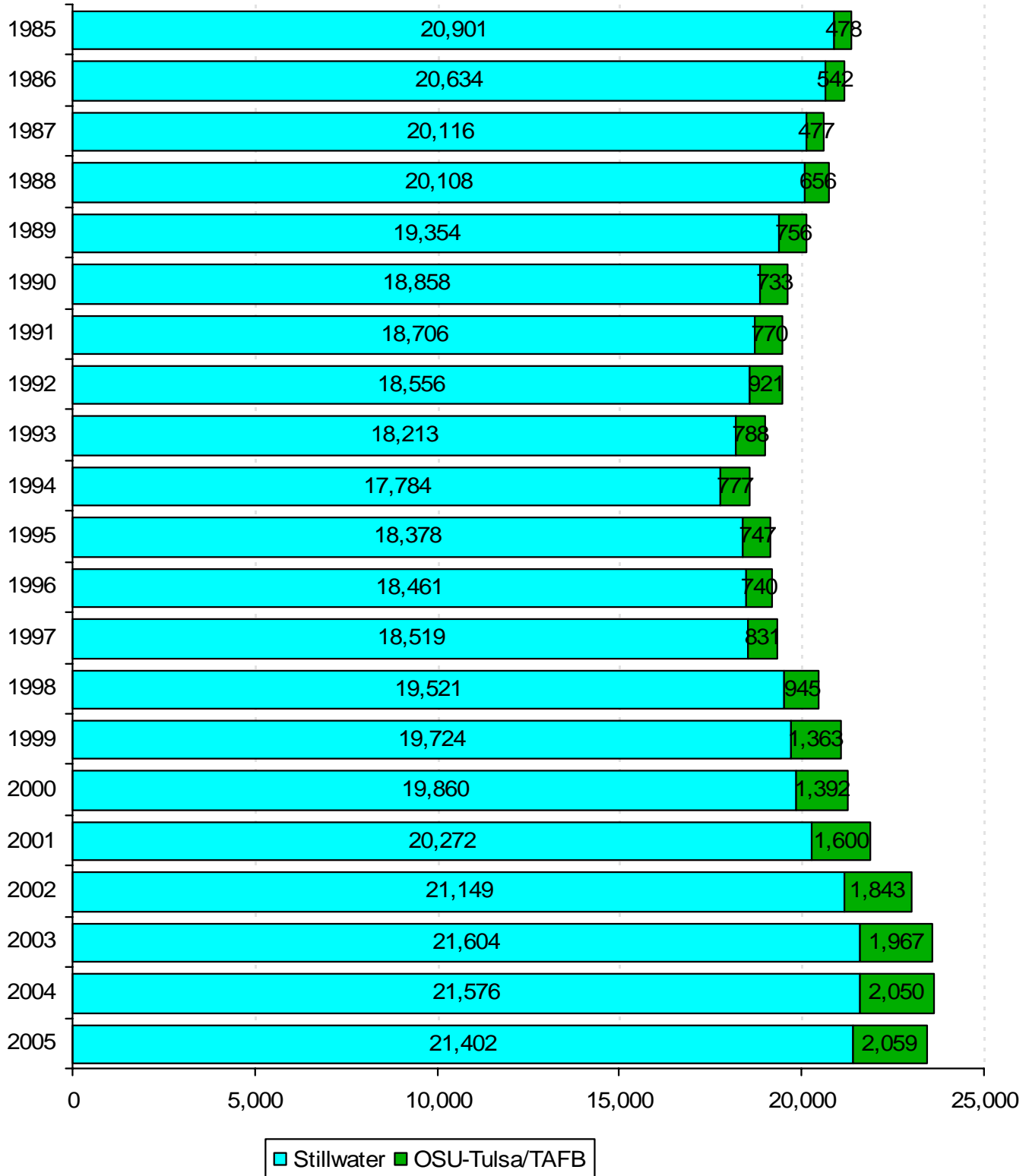


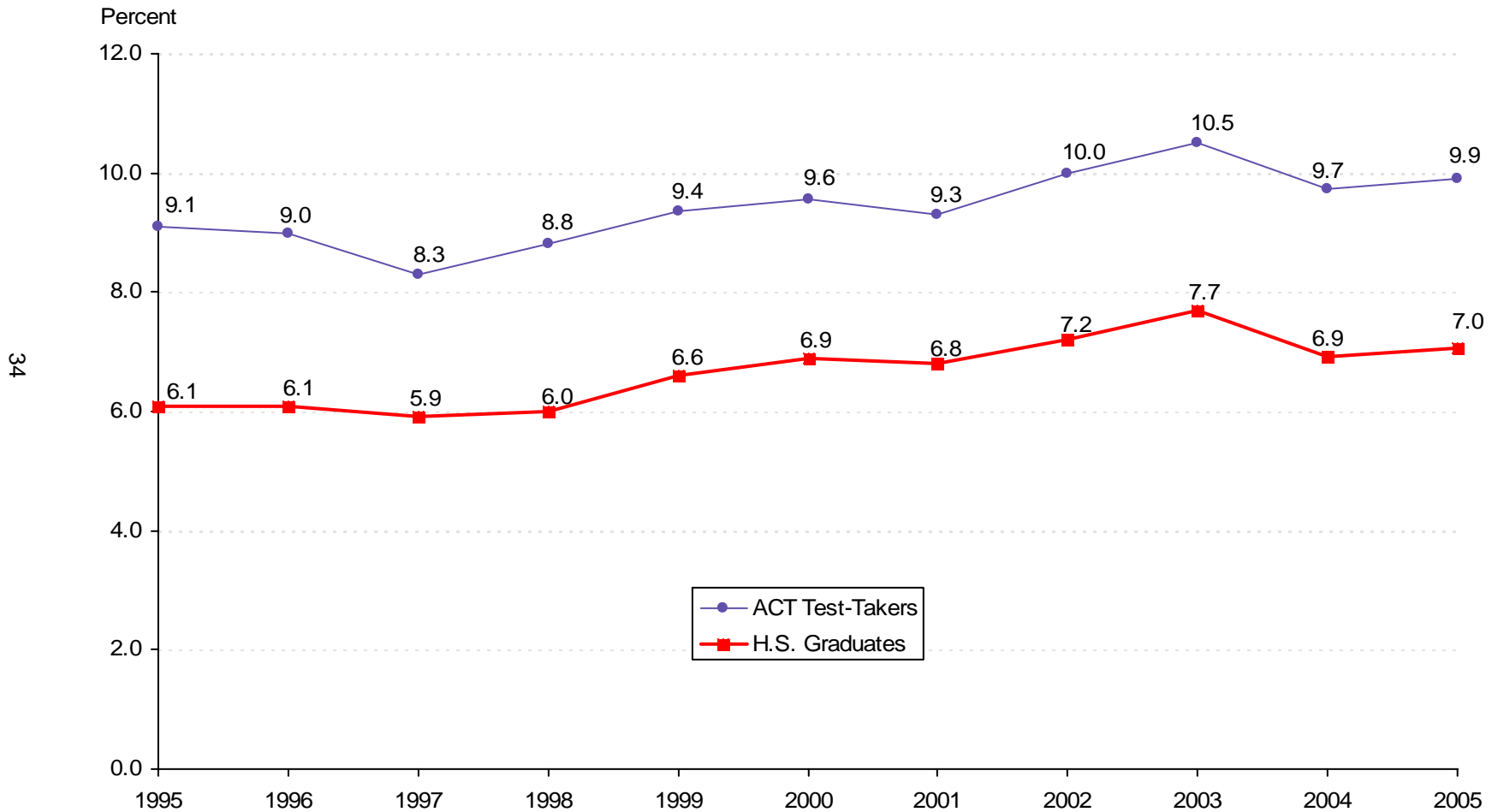
# ENROLLMENT TRENDS

This page is left blank intentionally.

**STILLWATER AND TULSA CAMPUS ENROLLMENT**  
**OKLAHOMA STATE UNIVERSITY**  
**FALL SEMESTERS 1985 THROUGH 2005**



**OKLAHOMA STATE UNIVERSITY SHARE OF THE MARKET**  
**RATIO OF BEGINNING RESIDENT FRESHMEN**  
**TO OKLAHOMA HIGH SCHOOL SPRING GRADUATES AND ACT TEST-TAKERS**  
**OKLAHOMA STATE UNIVERSITY**  
**FALL SEMESTERS 1995 THROUGH 2005**



*Note:* Total Oklahoma high school graduates for 2005 = 36,905; total Oklahoma ACT test-takers = 26,297. The beginning resident freshman count for Fall 2005 includes OSU-Tulsa students, excludes non-degree-seeking students and includes 53 first time concurrent resident students. (See Page 43).

*Source:* Student Data Report, Oklahoma State Regents for Higher Education, and ACT High School Profile Report - State Composite for Oklahoma.

**ENROLLMENT BY TYPE OF ADMISSION  
OKLAHOMA STATE UNIVERSITY  
FALL SEMESTERS 1995 THROUGH 2005**

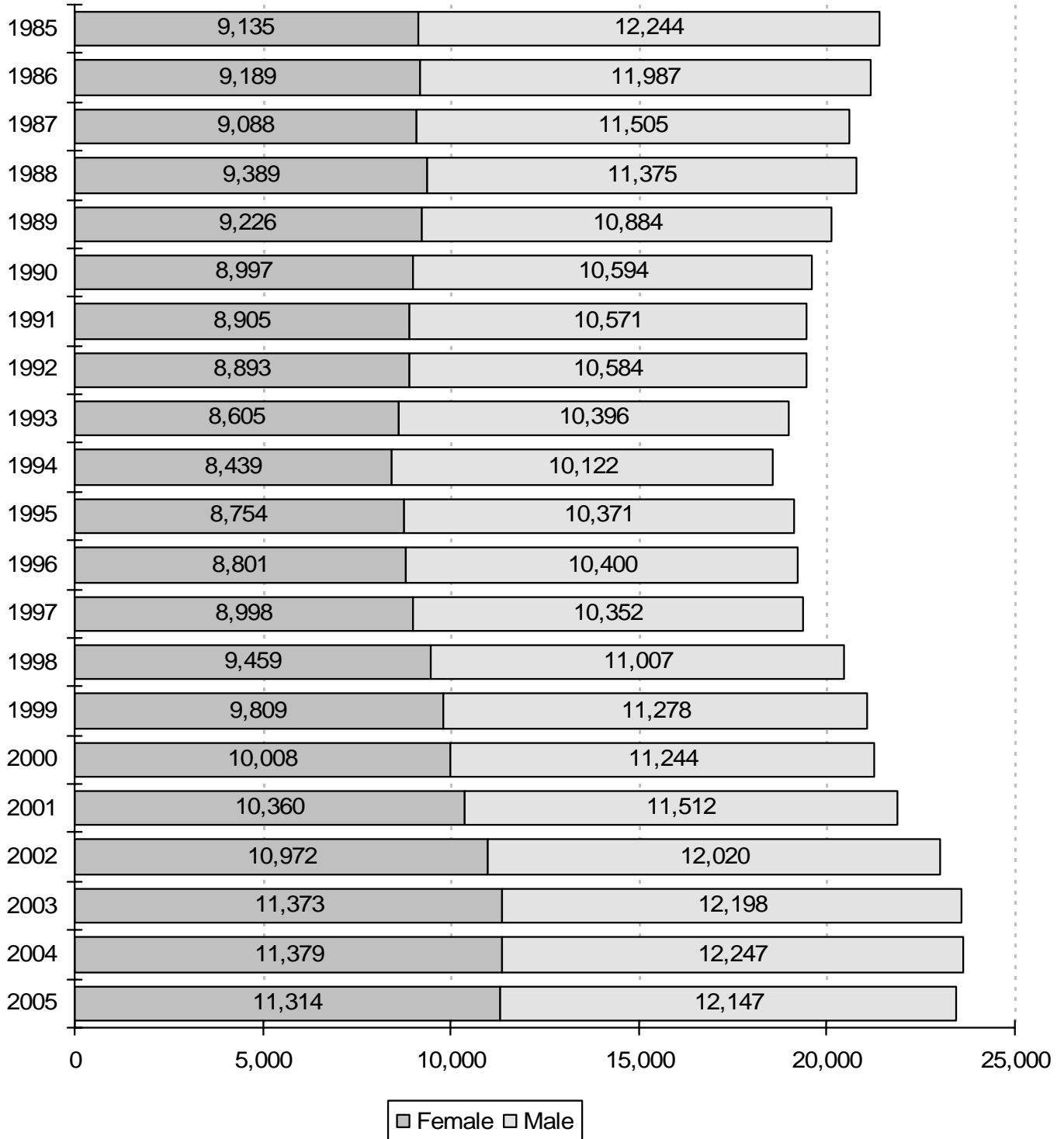
Fall	New Freshmen	% Inc / Dec	Continuing	% Inc / Dec	Readmission	% Inc / Dec	New Transfer	% Inc / Dec	Non-Degree	% Inc / Dec	Total	% Inc / Dec
1995	2,448		13,164		982		2,220		36		<b>18,850</b>	
1996	2,412	-1.5%	13,241	0.6%	1,005	2.3%	2,208	-0.5%	51	41.7%	<b>18,917</b>	<b>0.4%</b>
1997	2,331	-3.4%	13,307	0.5%	1,082	7.7%	2,271	2.9%	70	37.3%	<b>19,061</b>	<b>0.8%</b>
1998	2,602	11.6%	13,998	5.2%	933	-13.8%	2,536	11.7%	100	42.9%	<b>20,169</b>	<b>5.8%</b>
1999	2,889	11.0%	15,302	9.3%	126	-86.5%	2,398	-5.4%	78	-22.0%	<b>20,793</b>	<b>3.1%</b>
2000	3,076	6.5%	14,509	-5.2%	971	670.6%	2,272	-5.3%	132	69.2%	<b>20,960</b>	<b>0.8%</b>
2001	3,165	2.9%	14,941	3.0%	961	-1.0%	2,363	4.0%	153	15.9%	<b>21,583</b>	<b>3.0%</b>
2002	3,265	3.2%	15,756	5.5%	1,089	13.3%	2,506	6.1%	84	-45.1%	<b>22,700</b>	<b>5.2%</b>
2003	3,488	6.8%	16,116	2.3%	941	-13.6%	2,675	6.7%	54	-35.7%	<b>23,274</b>	<b>2.5%</b>
2004	3,325	-4.7%	16,275	1.0%	874	-7.1%	2,764	3.3%	92	70.4%	<b>23,330</b>	<b>0.2%</b>
2005*	3,369	1.3%	16,180	-0.6%	780	-10.8%	2,754	-0.4%	82	-10.9%	<b>23,165</b>	<b>-0.7%</b>

35

Note: This table excludes 296 professional students for Fall 2005. However, this table does include OSU-Tulsa figures for all years listed and will not match the figures for this page in the Student Profile books prior to Fall 2003. The percentage increase or decrease in enrollment between two semesters is shown in the "% Inc / Dec" column. Example: There was a 1.3% increase in enrollment of new freshmen from Fall 2004 to Fall 2005.

\* Fall 2005 new freshmen counts include 54 first time concurrent high school students. This total will not match the new freshmen counts found in the other pages of this book. Concurrent students have been included in order to make comparisons with the previous years on this page possible.

**ENROLLMENT BY GENDER**  
**OKLAHOMA STATE UNIVERSITY**  
**FALL SEMESTERS 1985 THROUGH 2005**



*Note:* This chart includes professional students and OSU-Tulsa students for all years listed. Hence, these figures will not match the figures in the Student Profiles prior to 2003.

**ENROLLMENT BY CLASSIFICATION  
OKLAHOMA STATE UNIVERSITY  
FALL SEMESTERS 1985 THROUGH 2005**

Year	Freshmen	Sophomores	Juniors	Seniors	Special		Professional	On-Campus Total	Off-Campus OSU-T & TAFB	Grand Total
					Undergrads	Graduates				
1985	4,471	3,843	4,324	4,602	12	3,376	273	<b>20,901</b>	478	<b>21,379</b>
1986	4,560	3,814	4,131	4,340	10	3,507	272	<b>20,634</b>	542	<b>21,176</b>
1987	4,185	3,629	4,009	4,332	7	3,678	276	<b>20,116</b>	477	<b>20,593</b>
1988	4,485	3,761	3,824	4,187	4	3,571	276	<b>20,108</b>	656	<b>20,764</b>
1989	4,036	3,791	3,809	4,004	1	3,454	259	<b>19,354</b>	756	<b>20,110</b>
1990	3,526	3,787	3,693	4,037	0	3,561	254	<b>18,858</b>	733	<b>19,591</b>
1991	3,321	3,431	3,996	4,102	3	3,601	252	<b>18,706</b>	770	<b>19,476</b>
1992	3,251	3,294	3,678	4,285	20	3,759	269	<b>18,556</b>	921	<b>19,477</b>
1993	3,161	3,200	3,727	4,195	22	3,636	272	<b>18,213</b>	788	<b>19,001</b>
1994	3,187	3,034	3,612	4,215	41	3,424	271	<b>17,784</b>	777	<b>18,561</b>
1995	3,446	3,040	3,646	4,273	34	3,664	275	<b>18,378</b>	747	<b>19,125</b>
1996	3,427	3,226	3,508	4,311	47	3,658	284	<b>18,461</b>	740	<b>19,201</b>
1997	3,378	3,308	3,683	4,168	68	3,625	289	<b>18,519</b>	831	<b>19,350</b>
1998	3,535	3,464	3,874	4,379	70	3,902	297	<b>19,521</b>	945	<b>20,466</b>
1999	4,068	3,543	3,923	4,235	45	3,616	294	<b>19,724</b>	1,363	<b>21,087</b>
2000	4,148	3,765	3,834	4,339	46	3,436	292	<b>19,860</b>	1,392	<b>21,252</b>
2001	4,361	3,886	3,925	4,234	51	3,526	289	<b>20,272</b>	1,600	<b>21,872</b>
2002	4,473	3,944	4,115	4,458	49	3,818	292	<b>21,149</b>	1,843	<b>22,992</b>
2003	4,649	4,083	4,197	4,548	14	3,816	297	<b>21,604</b>	1,967	<b>23,571</b>
2004	4,462	4,056	4,266	4,604	105	3,787	296	<b>21,576</b>	2,050	<b>23,626</b>
2005	4,325	4,035	4,391	4,736	97	3,522	296	<b>21,402</b>	2,059	<b>23,461</b>

Note: Effective 2000, Off-Campus OSU-T & Tinker Air Force Base column reflects OSU-Tulsa enrollment only.

**ENROLLMENT BY ETHNICITY  
OKLAHOMA STATE UNIVERSITY  
FALL SEMESTERS 1995 THROUGH 2005**

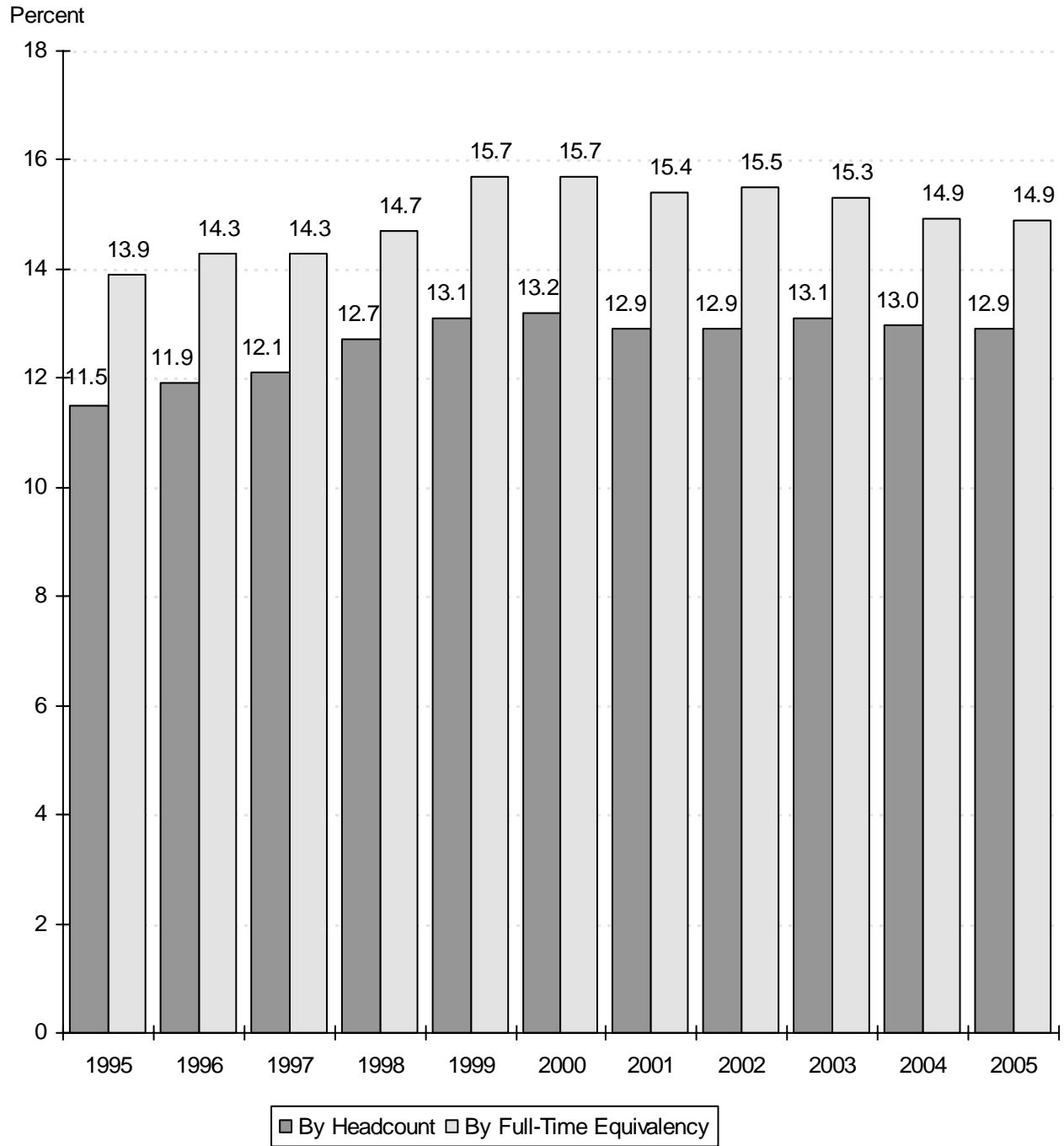
Fall Semester	White		African American		Native American		Hispanic		Asian		International		Total
	Number	%	Number	%	Number	%	Number	%	Number	%	Number	%	
1995	14,951	78.2%	472	2.5%	1,189	6.2%	280	1.5%	368	1.9%	1,865	9.8%	<b>19,125</b>
1996	14,959	77.9%	494	2.6%	1,223	6.4%	299	1.6%	355	1.8%	1,871	9.7%	<b>19,201</b>
1997	14,997	77.5%	537	2.8%	1,213	6.3%	303	1.6%	374	1.9%	1,926	10.0%	<b>19,350</b>
1998	15,856	77.5%	560	2.7%	1,377	6.7%	332	1.6%	363	1.8%	1,978	9.7%	<b>20,466</b>
1999	16,390	77.7%	694	3.3%	1,453	6.9%	384	1.8%	366	1.7%	1,800	8.5%	<b>21,087</b>
2000	16,507	77.7%	709	3.3%	1,555	7.3%	347	1.6%	366	1.7%	1,768	8.3%	<b>21,252</b>
2001	16,753	76.6%	720	3.3%	1,656	7.6%	400	1.8%	379	1.7%	1,964	9.0%	<b>21,872</b>
2002	17,475	76.0%	766	3.3%	1,784	7.8%	415	1.8%	375	1.6%	2,177	9.5%	<b>22,992</b>
2003	17,905	76.0%	778	3.3%	1,838	7.8%	444	1.9%	371	1.6%	2,235	9.5%	<b>23,571</b>
2004	17,943	75.9%	918	3.9%	1,896	8.0%	447	1.9%	389	1.6%	2,033	8.6%	<b>23,626</b>
2005	17,894	76.3%	917	3.9%	1,973	8.4%	523	2.2%	388	1.7%	1,766	7.5%	<b>23,461</b>

Note: This table includes professional students and OSU-Tulsa students for all years listed. Student Profile books prior to Fall 2003 do not contain OSU-Tulsa students on this page.

**OSU ENROLLMENT AS A PERCENT OF TOTAL ENROLLMENT  
IN THE OKLAHOMA STATE SYSTEMS (PUBLIC)**

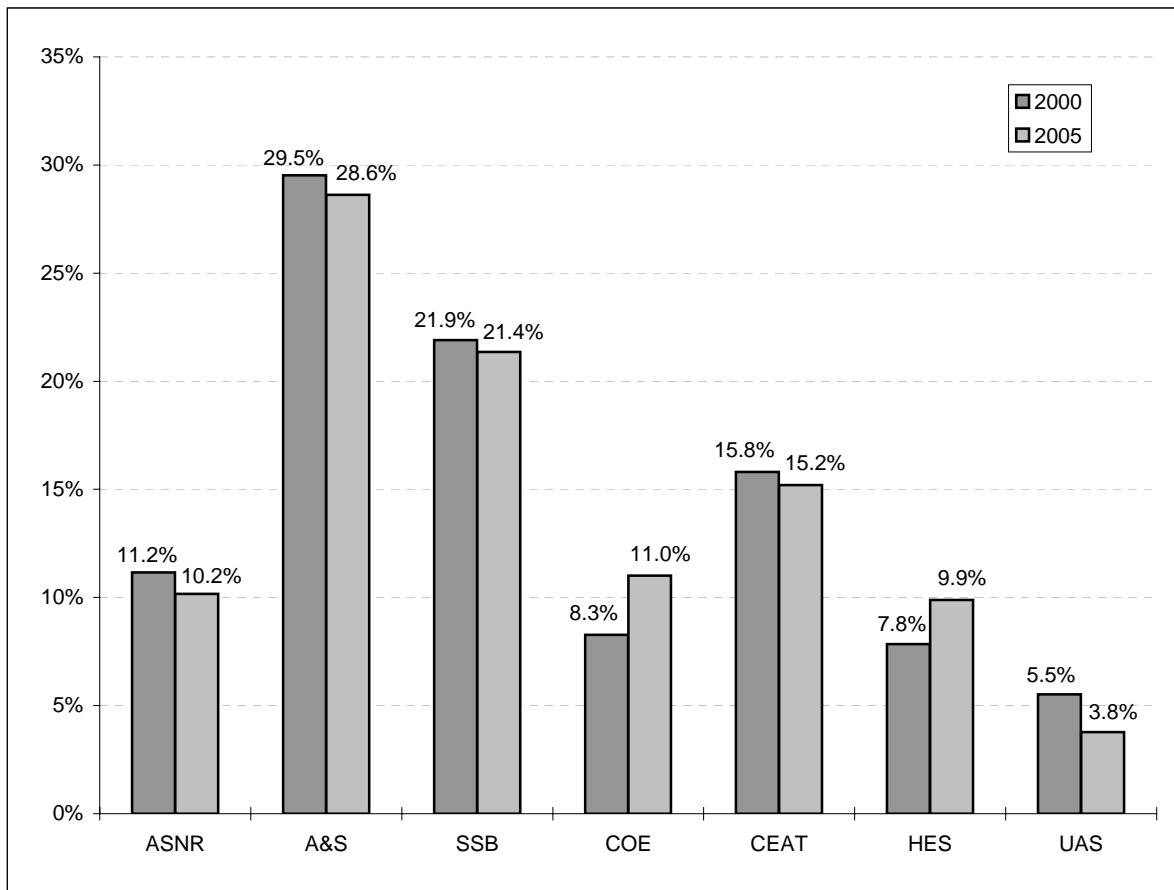
**OKLAHOMA STATE UNIVERSITY**

**FALL SEMESTERS 1995 THROUGH 2005**



Source: Preliminary Enrollment Report for Oklahoma Higher Education Fall 2005,  
Oklahoma State Regents for Higher Education.

**COMPARISON OF DISTRIBUTION OF UNDERGRADUATE MAJORS BY COLLEGE  
OKLAHOMA STATE UNIVERSITY  
FALL SEMESTERS 2000 AND 2005**



**UNDERGRADUATE MAJORS BY COLLEGE  
OKLAHOMA STATE UNIVERSITY  
FALL SEMESTERS 2000 THROUGH 2005**

Year	Ag. Sci. & Nat. Res.	Arts & Sciences	Spears Sch. of Bus.	Education	Engr., Arch., & Tech.	Human Envir. Sci.	Univ. Acad. Services	Total
2000	1,858	4,918	3,648	1,378	2,632	1,306	919	<b>16,659</b>
2001	1,883	5,039	3,772	1,498	2,723	1,354	942	<b>17,211</b>
2002	1,942	5,123	3,810	1,780	2,858	1,573	957	<b>18,043</b>
2003	1,941	5,332	4,043	1,836	2,885	1,723	923	<b>18,683</b>
2004	1,945	5,484	4,016	1,982	2,838	1,826	698	<b>18,789</b>
2005	1,922	5,412	4,038	2,081	2,874	1,868	714	<b>18,909</b>

Note: Students are reported in the college in which they are enrolled. This page includes students enrolled in OSU-Tulsa. Student Profile books prior to Fall 2003 do not contain OSU-Tulsa students on this page.

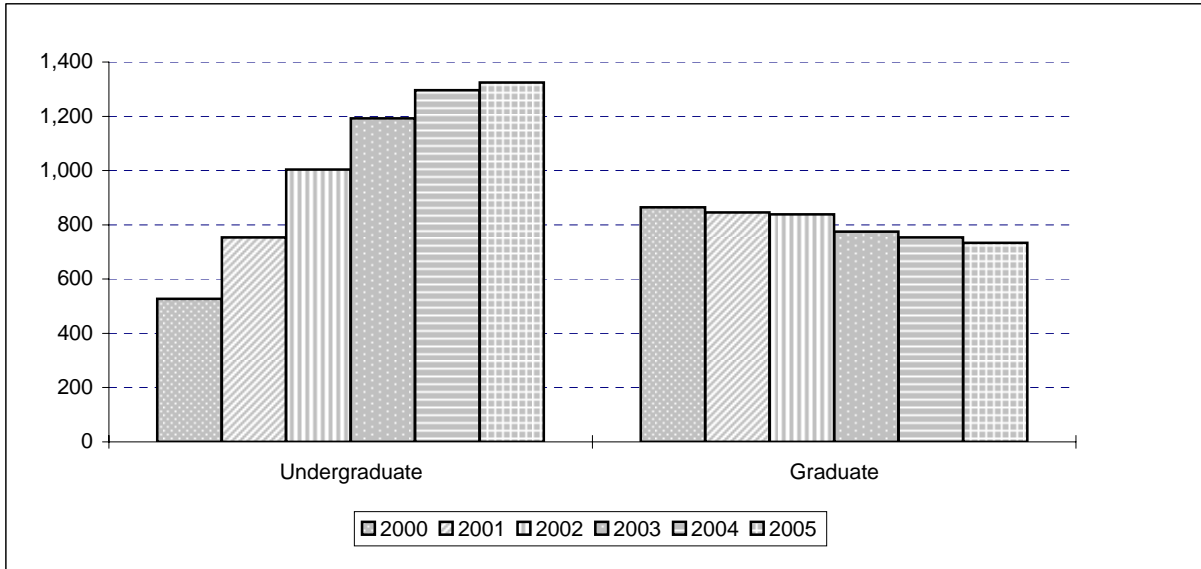
**ENROLLMENT CHANGES  
OKLAHOMA STATE UNIVERSITY  
FALL SEMESTERS 2000 AND 2005**

	2000	2005	% Change
<b><u>UNDERGRADUATE MAJORS</u></b>			
Agricultural Sciences & Natural Resources	1,858	1,922	3.4%
Arts & Sciences	4,918	5,412	10.0%
Spears School of Business	3,648	4,038	10.7%
Education	1,378	2,081	51.0%
Engineering, Architecture, & Technology	2,632	2,874	9.2%
Human Environmental Sciences	1,306	1,868	43.0%
University Academic Services	919	714	-22.3%
<b><u>AGE</u></b>			
18 & Under	1,646	1,737	5.5%
19	2,858	3,077	7.7%
20	2,767	3,199	15.6%
21	2,955	3,373	14.1%
22	2,508	2,992	19.3%
23-29	5,385	5,871	9.0%
30-39	1,823	1,903	4.4%
40 & Over	1,310	1,309	-0.1%
Unknown	0	0	
<b><u>CLASSIFICATION</u></b>			
New Freshmen*	3,076	3,304	7.4%
Other Freshmen	1,088	1,034	-5.0%
Sophomores	3,810	4,138	8.6%
Juniors	4,012	4,882	21.7%
Seniors	4,543	5,417	19.2%
Specials	720	587	-18.5%
Graduates	3,711	3,803	2.5%
Professional	292	296	1.4%
<b><u>RESIDENT STATUS</u></b>			
In-State	16,895	18,127	7.3%
Out-of-State	2,589	3,568	37.8%
International	1,768	1,766	-0.1%
<b><u>ETHNICITY</u></b>			
White	16,507	17,894	8.4%
African American	709	917	29.3%
Native American	1,555	1,973	26.9%
Hispanic	347	523	50.7%
Asian	366	388	6.0%
International	1,768	1,766	-0.1%
<b><u>GENDER</u></b>			
Female	10,008	11,314	13.0%
Male	11,244	12,147	8.0%
<b>OVERALL ENROLLMENT</b>	<b>21,252</b>	<b>23,461</b>	<b>10.4%</b>

Note: This table includes professional students and OSU-Tulsa students. Student Profile books prior to Fall 2003 do not contain OSU-Tulsa students on this page.

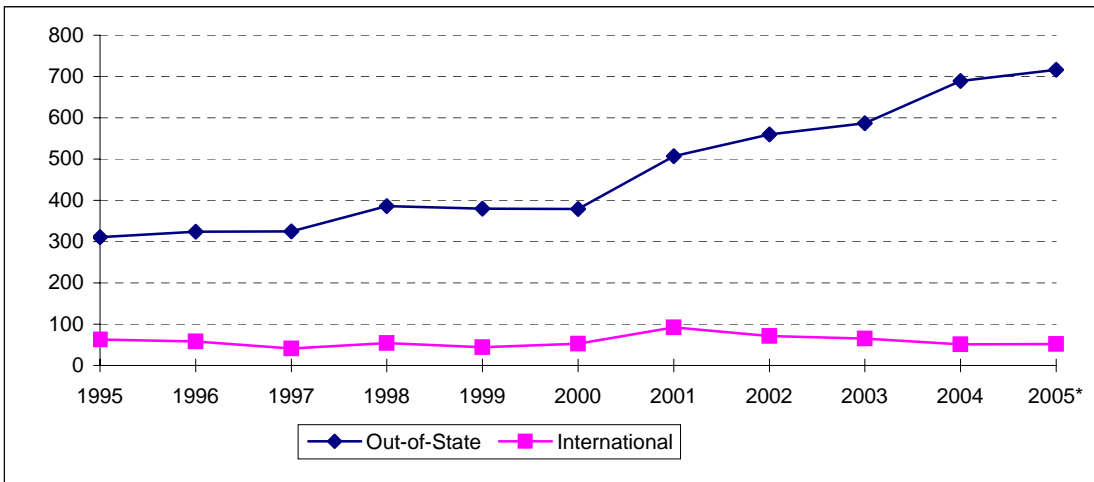
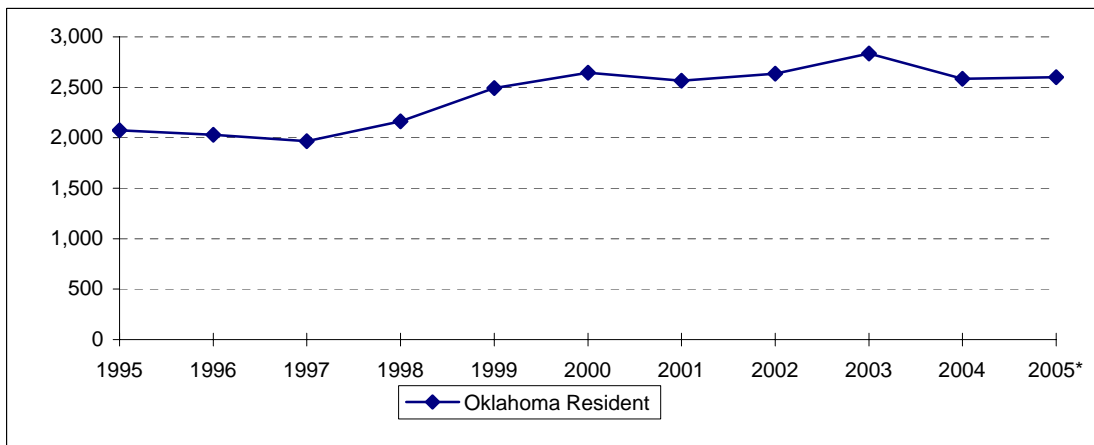
\* 13 students classified in this table as sophomores for 2005 are in their first year of college and thus listed in other tables as new freshmen. 2 students classified as new freshmen are first time concurrent students.

**ENROLLMENT CHANGES  
OKLAHOMA STATE UNIVERSITY AT TULSA  
FALL SEMESTERS 2000 THROUGH 2005**



Classification	2000	2001	2002	2003	2004	2005	% Change 2004 to 2005
Undergraduate	527	754	1,004	1,192	1,296	1,325	2.2%
Freshman	16	21	34	46	25	13	-48.0%
Sophomore	45	87	88	112	115	103	-10.4%
Junior	178	247	389	440	501	491	-2.0%
Senior	204	297	458	554	607	681	12.2%
Special	84	102	35	40	48	37	-22.9%
Graduate	865	846	839	775	754	734	-2.7%
Special	270	217	203	188	208	199	-4.3%
Master	504	527	542	507	435	415	-4.6%
Doctorate	91	102	94	80	111	120	8.1%
<b>Grand Total</b>	<b>1,392</b>	<b>1,600</b>	<b>1,843</b>	<b>1,967</b>	<b>2,050</b>	<b>2,059</b>	<b>0.4%</b>

**NEW FRESHMEN ENROLLMENT BY RESIDENCY  
OKLAHOMA STATE UNIVERSITY  
FALL SEMESTERS 1995 THROUGH 2005**



Fall Semester	Oklahoma Resident	Out-of-State	International	Total
1995	2,074	311	63	2,448
1996	2,030	324	58	2,412
1997	1,965	325	41	2,331
1998	2,162	386	54	2,602
1999	2,492	380	44	2,916
2000	2,644	379	53	3,076
2001	2,566	507	92	3,165
2002	2,634	560	71	3,265
2003	2,836	587	65	3,488
2004	2,585	689	51	3,325
2005*	2,601	716	52	3,369

Note: This table includes students at OSU-Tulsa, but does not include non-degree-seeking new freshman. Student Profile books prior to Fall 2003 do not contain OSU-Tulsa students on this page.

\* Fall 2005 counts include 53 first time concurrent students who are Oklahoma Residents, and 1 first time concurrent student who is an Out-of-State Resident. The first time concurrent students have been included for Fall 2005 since it is included in the Fall 1995 to Fall 2004 new freshmen counts on this page. The new freshman count on this page will not match the counts found on other pages.

